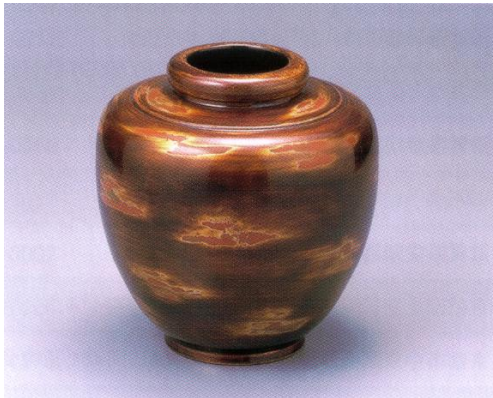


和歌山県の産地 (W A K A Y A M A)



KISHU-SHIKKI

(LACQUERWARE)

Kainan-shi and environs, Wakayama Prefecture

Kishu-shikki is produced mainly in Kuroe district in the north-east Kainan. Around the Muromachi Period and the Period of Warring State, a group of wood-turners from Shiga settled here and initiated the manufacturing of wooden bowl using the ample resources of Japanese cypress, which became a seed of shibu-chi wan (bowl) manufacturing where base coat of shibu (tannin) is applied. In and after the Edo Period, as the demand of lacquer-ware for commoners' everyday use grew, lacquerware craft flourished further and the region was known nationwide as a big production center of shibu-chi wan. With this historical backdrop, Kishu-shikki was born as 'Kuroe-nuri', which developed into 'Kishu-shikki' hand-in-hand with the development of the distribution channel.

KISHU-TANSU

(FURNITURE)

Wakayama-shi, Wakayama Prefecture

Kishu-tansu was originated in Osaka i.e. Kishu played a part of producing tansu as local product of Osaka. In the Tempo period (1830-1844) tansu had been used as nuptial furnishing goods by the people other than the warrior class. The manufacturing techniques are believed to have been established in Wakayama at the end of the Edo Period.

Because of the material's soft texture, color tone and the beauty of the grain, paulownia chest matches either the Japanese room or the Western-style room creating the atmosphere of comfort and elegance. Paulownia chest's less expansive, less deformative and light-weighted features add to the durability and the ease of transportation. Paulownia board absorbs (or gives off) water under moist (or dry) condition. Because of this, paulownia chest is said to save the contents (clothes) for the life of its own in the event of fire.

