

Biofringe High-Performance Contact Material

- Innovative waste treatment system that significantly expands the potential of bio-treatment
- High quality/cost-performance
- Development of the TJeI brand

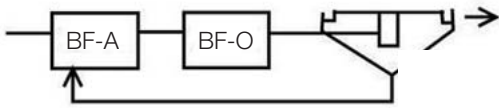
Marketing Theme and Comparison with Other Systems

Marketing can be developed to meet market needs based on differentiation and innovative benefits derived from incorporating natural organisms into systems. To be marketed as the trustworthy TJeI brand.

1. Urban and rural sewage

Biofringe's A/O Process (recycled nitrification/denitrification/dephosphorization)

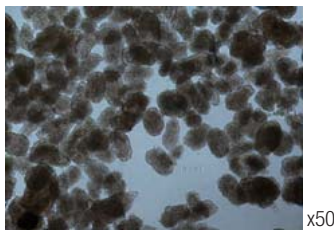
Can handle heavy loads (1.75 kg-BOD/m³) in short periods of time (completely nitrified in 3.5 hours).



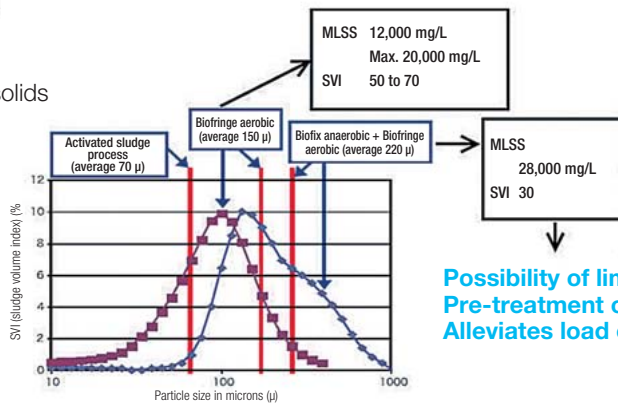
Comparison results for MBR x 2, AO/A₂O x 6, OD x 12
Avoid compliance crises

2. Aerobic granules

Turning peeled-off sludge into suspended solids



Large-particle-size floc formulation



Possibility of limit design
Pre-treatment of MBR
Alleviates load on membrane

3. High-volume treatment of low-concentration raw water

100,000 m³/day, BOD10 → 1 mg/L, 900 m³ tank, HRT 12 minutes



Innovative results; no comparable technology

- Pre-treatment process for drinking water
- Prevention of eutrophication
- Blue-green algae countermeasure

4. Industrial wastewater

- Four times better performance
- One-tenth the amount of sludge generated
- High MLSS
- No chemicals necessary
- No dewatering equipment necessary
- Maintenance-free
- Long-term stable operation

Streamlined flow achieved

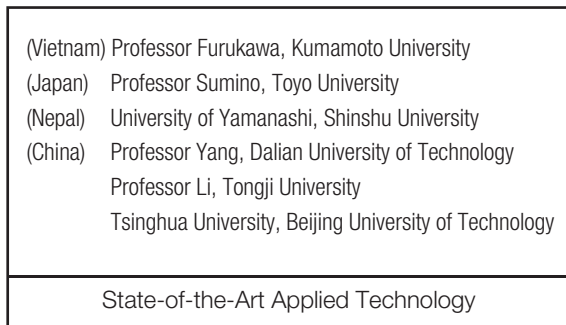
Installation Examples

- Approximately 350 installations over 17 years in Japan
Water volumes: from 5 to 90,000 m³/day From simple to sophisticated treatments
BOD concentrations: from 10 to 20,000 mg/L From easily decomposable to recalcitrant substances
- Internationally: Taiwan, China, U.S., Malaysia, India
- Developing practical technologies to meet customer needs. Offering innovative streamlined flow assembly.

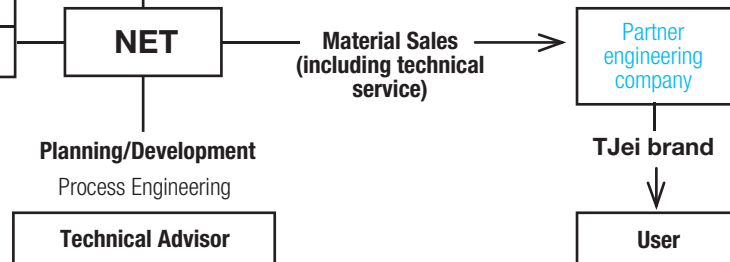
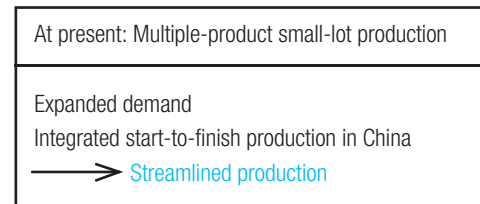
Meeting Thai needs and market

NET Organization

Technology Development



Material Manufacturing



Organized with top-drawer personnel via total outsourcing

Future themes:

- (1) Significant streamlining based on integrated start-to-finish production of materials
- (2) Breaking away from conventional wisdom, unified design concept, engineering organization

Seeking Engineering Company Partners

NET: Materials, basic technologies, practical applied technology, other technical services

Partner engineering company: Design, construction, trial operation and adjustment, management (High-level technology with BOT [build-operate-transfer] possible; integrated project management)

→ **Functionally, one company**

- Licensing agreement, initial contract payment, special price for Biofringe
- TJeI brand usage license
- Providing applied technology expertise
- Grant of non-exclusive patent licenses
- Exclusive right to sell new Biofix material in limited area
- Other types of services

Conclusion

1. Understanding and faith in the intrinsic nature of new technology. Breaking away from conventional wisdom.
2. Achieve high quality/cost-performance by fostering development of practical applied technologies to meet market needs.
3. Project-based integrated management system with engineering companies at its core.

Best use of Thai water resources → **Contribution to the community**
Environmental clean-up

Please visit our website for descriptions of our technologies.

<http://www.fk-bio.net>

Search term: BFQCP

Inquiries

NET Co., Ltd.

<http://www.fk-bio.net>

E-mail

3-6-216 Koyodai, Kawanishi-shi, Hyogo 666-0115, Japan

TEL +81-72-792-5151 FAX +81-72-793-1351